

RheB

Catalog Number: 26015

Gene Symbol: RHEB

Description: Anti-RheB Mouse Monoclonal Antibody

Background: RheB (Ras Homolog Enriched in Brain) is an evolutionarily conserved member of the Ras-family of small GTP-binding proteins originally found to be rapidly induced by synaptic activity in the hippocampus following seizure. While it is expressed at relatively high levels in the brain, RheB is widely expressed in other tissues and may be induced by growth factor stimulation. RheB has an important role in regulating the insulin/TOR signaling pathway. The mammalian target of rapamycin, mTOR, is a serine/threonine protein kinase that acts as a sensor for ATP and amino acids, balancing the availability of nutrients with translation and cell growth. The tuberin/hamartin (TSC2/TSC1) complex inhibits mTOR activity indirectly by inhibiting RheB via tuberin's GAP activity.

Immunogen: Recombinant full length protein of RheB.

Tested Applications: ELISA, WB, IHC

Recommended Dilutions:

ELISA	1:100-1:5000
WB	1:100-1:1000
IHC	1:100-1:1000

Concentration: 1 mg/ml

Host: Mouse

Clonality: Monoclonal

Isotype: IgG

Purity: Purified from ascites

Format: Liquid

Preservative: No

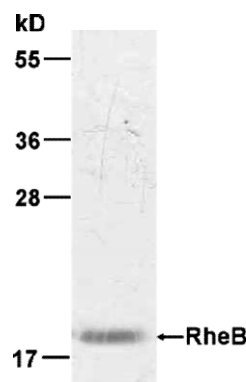
Constituents: PBS (without Mg²⁺ and Ca²⁺), pH

7.4, 150 mM NaCl, 50% glycerol

Species Reactivity: RheB antibody recognizes RheB proteins of vertebrates.

Storage Conditions: Store at -20°C. Avoid freeze / thaw cycles

Western blot:



WB: anti-RheB MAb

Western blot analysis of RheB proteins.

HEK-293 whole-cell lysate was used for Western blot.

FOR RESEARCH USE ONLY. NOT FOR DIAGNOSTIC APPLICATIONS